

A black and white photograph of a chef's hands pouring a liquid from a bottle through a fine-mesh strainer into a glass. The chef has a tattoo on their left arm. The background is blurred, showing other people in a kitchen or restaurant setting.

# GROUPS & EVENTS

BREAD STREET KITCHEN

**GORDON RAMSAY RESTAURANTS**

# BREAD STREET

## KITCHEN

### PERFECT FOR

Exclusive hire, breakfast meetings, group dining, weddings,  
drinks parties, late night, masterclasses.



BREAD STREET

KITCHEN  
& BAR

# BREAD STREET

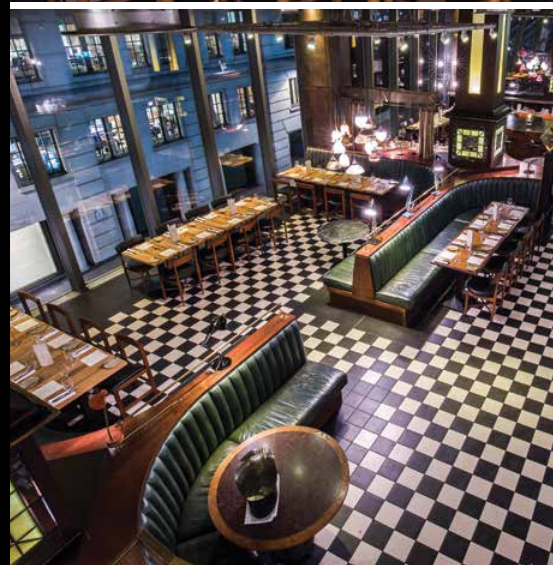
## KITCHEN

This lively, breath-taking space in the shadow of St Paul's mixes vintage and modern style with the theatrics of an open kitchen. It's especially good for large-scale parties, corporate events and weddings but, with a series of roomy banquettes and two quirky bars set on split levels, has the flexibility to host intimate get-togethers too.

Looking for a dash of inspiration? Bread Street Kitchen has a series of food and cocktail masterclasses which will enhance any event.

### CAPACITIES

| AREA           | SEATED | STANDING |
|----------------|--------|----------|
| Exclusive Hire | 320    | 500      |
| Group Dining   | 100    | •        |
| Downstairs Bar | •      | 70       |
| Upstairs Bar   | •      | 100      |



### BREAD STREET KITCHEN

|                |     |     |   |
|----------------|-----|-----|---|
| Exclusive Hire | 320 | 500 | Y |
| Group Dining   | 100 | •   | Y |
| Downstairs Bar | •   | 70  | Y |
| Upstairs Bar   | •   | 100 | Y |

### HEDDON STREET KITCHEN

|                               |     |     |   |
|-------------------------------|-----|-----|---|
| Exclusive Hire (split levels) | 250 | 420 | Y |
| Group Dining                  | 100 | 120 | Y |
| Private Dining                | 12  | 15  | N |
| Kitchen Table                 | 10  | •   | N |

### LONDON HOUSE

|                     |    |     |   |
|---------------------|----|-----|---|
| Exclusive Hire      | 85 | 130 | Y |
| Group Dining        | 40 | 45  | Y |
| Semi-Private Spaces | 10 | 12  | Y |
| Bar                 | •  | 45  | Y |
| Garden              | 20 | 45  | Y |

### MAZE

|                |     |     |   |
|----------------|-----|-----|---|
| Exclusive Hire | 160 | 350 | Y |
| Group Dining   | 50  | 80  | Y |
| Maze View      | 14  | 15  | N |
| Dalby Room     | 11  | 10  | Y |
| Hampton Room   | 42  | 60  | Y |
| Somerton Room  | 42  | 60  | Y |
| Kitchen Table  | 7   | •   | N |

### MAZE GRILL - MAYFAIR

|                 |    |     |   |
|-----------------|----|-----|---|
| Exclusive Hire  | 80 | 120 | Y |
| Group Dining    | 20 | •   | Y |
| Butcher's Block | 15 | •   | Y |

### MAZE GRILL - PARK WALK

|                |    |    |   |
|----------------|----|----|---|
| Exclusive Hire | 60 | •  | Y |
| Group Dining   | 35 | 85 | Y |

### MAZE GRILL - ROYAL HOSPITAL ROAD

|                         |             |   |   |
|-------------------------|-------------|---|---|
| Exclusive Hire          | 50          | • | Y |
| Group Dining            | 30          | • | Y |
| Vault Dining - 3 Vaults | 5 per vault | • | N |

### PÉTRUS

|                |    |   |   |
|----------------|----|---|---|
| Exclusive Hire | 60 | • | Y |
| Kitchen Table  | 8  | • | N |

### PLANE FOOD

|                |     |    |   |
|----------------|-----|----|---|
| Exclusive Hire | 150 | •  | Y |
| Group Dining   | 50  | •  | Y |
| Private Dining | 25  | 40 | Y |

### RESTAURANT GORDON RAMSAY

|                   |    |   |   |
|-------------------|----|---|---|
| Exclusive Hire    | 44 | • | Y |
| Inspiration Table | 6  | • | N |

### SAVOY GRILL

|                   |     |    |   |
|-------------------|-----|----|---|
| Exclusive Hire    | 120 | •  | Y |
| Group Dining      | 70  | •  | Y |
| D'Oyly Carte Room | 42  | 60 | Y |
| Kitchen Table     | 8   | •  | N |

### THE NARROW

|                |     |     |   |
|----------------|-----|-----|---|
| Exclusive Hire | 120 | 250 | Y |
| Boat House     | 35  | 40  | Y |
| Bar & Lounge   | •   | 70  | Y |
| River Room     | 20  | 30  | Y |
| Conservatory   | 60  | 120 | Y |

### UNION STREET CAFÉ

|                |     |     |   |
|----------------|-----|-----|---|
| Exclusive Hire | 150 | 300 | Y |
| Group Dining   | 70  | 60  | Y |
| Mezzanine      | 46  | 60  | Y |
| Bar            | 70  | 110 | N |
| Media Room     | 22  | 45  | N |

### YORK & ALBANY

|                    |     |     |   |
|--------------------|-----|-----|---|
| Exclusive Hire     | 150 | 350 | Y |
| Group Dining       | 50  | 85  | Y |
| Bar                | 50  | 120 | Y |
| Wine Bar & Terrace | 35  | 55  | Y |
| Regency Room       | 26  | 50  | Y |
| Gloucester Gate    | 42  | 60  | N |
| On The Pass        | 30  | •   | N |

SEATED STANDING DAYLIGHT



For exclusive use or more information  
contact Groups & Events:




0207 592 1373

[groupsandevents@gordonramsay.com](mailto:groupsandevents@gordonramsay.com)

---

**GORDON RAMSAY RESTAURANTS**

[www.gordonramsayrestaurants.com](http://www.gordonramsayrestaurants.com)

 [@GordonRamsayGRP](https://twitter.com/GordonRamsayGRP)  [/GordonRamsayRestaurants](https://www.facebook.com/GordonRamsayRestaurants)  [@gordonramsayrestaurants](https://www.instagram.com/gordonramsayrestaurants)